



ConStyle™ Architectural Products

Signature

n o u r v e

Hillaldam

Malaysia Innovation with EU Technology

Since its inception in 1992, Constyle Architectural Products Sdn. Bhd. has evolved from an assembling plant to a near full fledged manufacturing plant. The institution produces high quality windows and doors accessories, where products are finely curated according to all home and commercial needs.

The goal of Constyle is to work professionally in accordance with its core values of Creative, Attentive and Productive. Our philosophy is based on fulfilling customer satisfaction through design, manufacture and marketing cutting-edge solutions in line with market demands, locally and internationally.

Constyle Signature

Constyle Signature has successfully launched in July 2017, to set our foot on the global market. With products range covering window application, sliding window application, sliding door application and swing door application, our R&D and technical teams are able to provide all kinds of detailed chemical analysis and performance test reports. Driven with the vision and social responsibility of “The Window and Door Solutions Provider”, Constyle Signature, Malaysia innovation inspired by European technology, is leaping to ranking ahead amongst the world’s finest hardware brands.

Constyle Nourve

Constyle Nourve is to be recognized as high achievers in product quality that will elevate to the leader position amongst manufacturers within the domain of fittings for aluminium locksmith production in the region. Constyle Nourve emphasizes on brand recognition by the design and quality that will meet customer needs in terms of aesthetic, endurance and technical specifications; also to be harmonized with valid regulations and legislations.

Constyle Hillaldam

Constyle Hillaldam is an accredited manufacturer, supplying a full range of aluminium and glass doors system. We are working on to become the market leader in Malaysia and have been responsible for the development and innovation of many new systems which are now marketed throughout South East Asia. Constyle Hillaldam has the capability to develop new systems with excellent quality in reasonable time frame and competitive prices. This has allowed us to form partnerships with numerous international customers.



Window
Application



Swing Door
Application



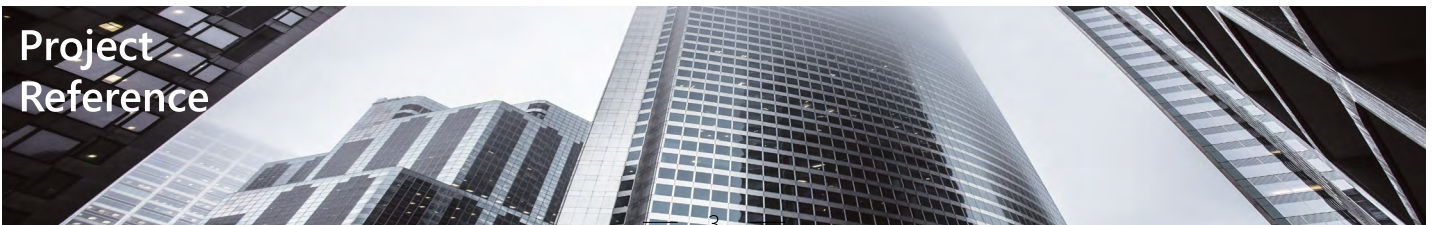
Sliding Door
Application

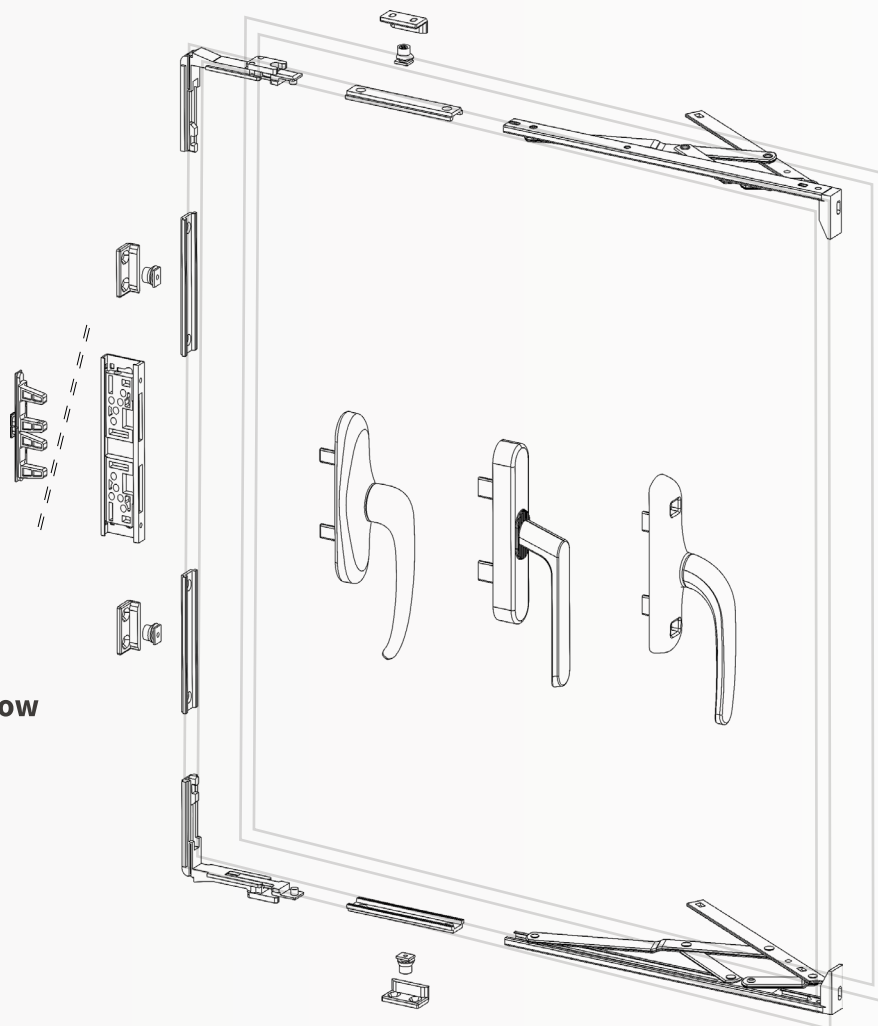


Folding Door
Application



Project
Reference





1

Side Hung Window

4 Points



Bi-Directional Actuator
A 90160 (Pg 13)



External Kit
A 90240 (Pg 13)



Connecting Rod



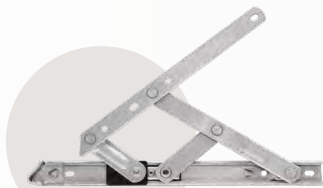
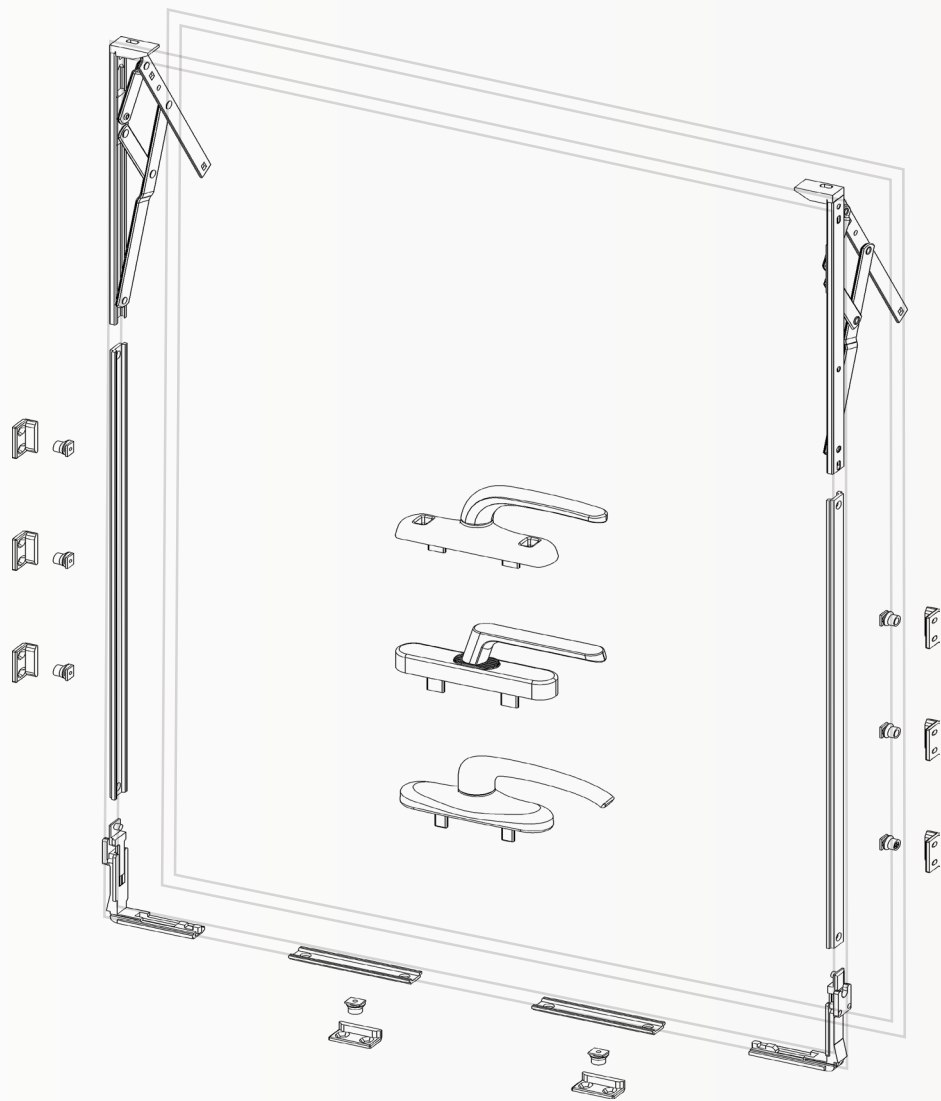
Striker C1267
A 90100 (Pg 13)

WINDOW SOLUTIONS

Window Application

2

Top Hung Window
8 Points



Friction Stays
(Pg 10 & 11)



Locking Pawl
A 90120 (Pg 13)



Corner Drive
A 90140 (Pg 13)

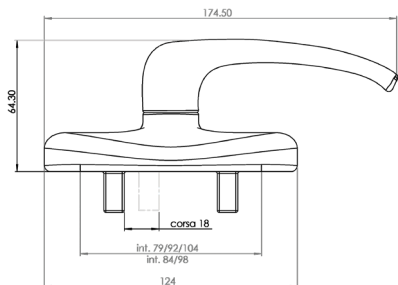


Connecting Rod



BOLD Design Cremone

CS 00140



ConStyle™
Signature

Feature

Designed for curtain wall window application; top hung and side hung application. It offers greater travel distance up to 18mm in one direction.

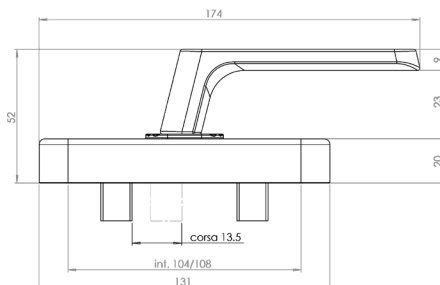
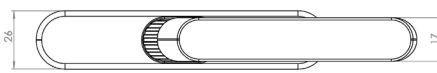
Material

Die-cast aluminium lever; die-cast zamak body; galvanized steel locking screw; nylon shim washer; gear and removable sliders in die-cast zamak; steel 90 latch spring; lower handle base in acetalic resin; stainless steel fixing screw and plate



DAL Design Cremone

CS 00100



ConStyle™
Signature

Feature

Blended in seamless with mounting screw cover. It offers face mounting for common casement window (top hung and side hung) and curtain wall window application.

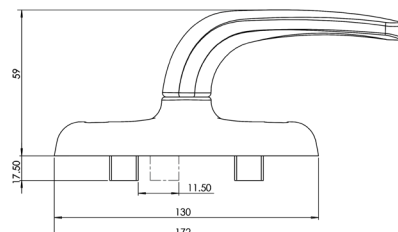
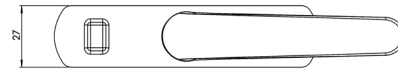
Material

Extruded aluminium lever; deep-drawn aluminium body cover; galvanized steel locking screw; nylon shim; body, gear and removable sliders in die-cast zamak; steel 90 latch spring; lower handle base in acetalic resin



EDGE Design Cremone

CS 00120



ConStyle™
Signature

Feature

Equipped with galvanised steel slider, it offers face mounting for common casement window (top hung and side hung) and curtain wall window application.

Material

Die-cast aluminium lever; die-cast zamak body; stainless steel locking screw; nylon shim washers; gear and removable sliders in galvanized steel; steel spring; handle base in acetalic resin; extruded aluminium screw covering strips

HANDLES

Window Application



FORTIS Design Cremone

CS 00160



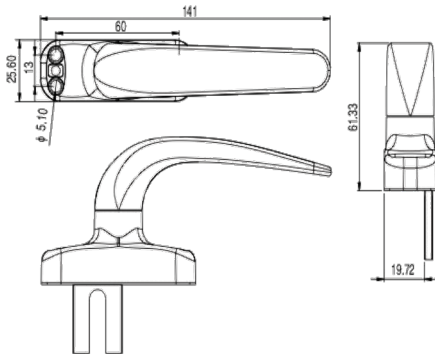
ENZO Cremone

CN 20100

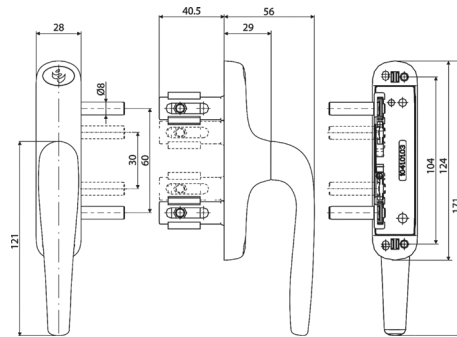


VITALE Cremone

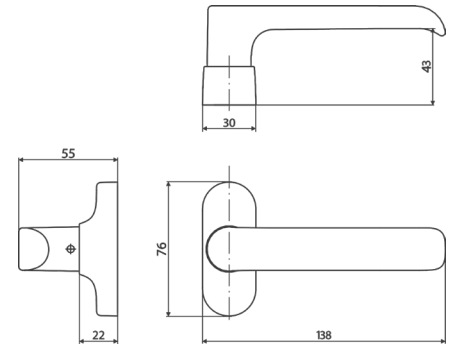
CN 20160



ConStyle™
Signature



ConStyle™
n o u r v e



ConStyle™
n o u r v e

Feature

Aesthetically ergonomic and practical. All major components are made to deliver an exceptional durability and high impact strength.

It is an uni-directional drive handle, applicable on top hung and side hung windows.

Material

High quality zinc alloy and enhanced with stainless steel reinforcement in critical areas

Feature

Designed for installation on top hung and side hung window with Euro Groove standards.

Material

Handle is made of an aluminium and zinc alloy by casting under high pressure. Plastic parts are made of polyamide and polyacetal. Bolts are made of carbon galvanised steel.

Feature

Designed for installation on casement & curtain wall systems.

Material

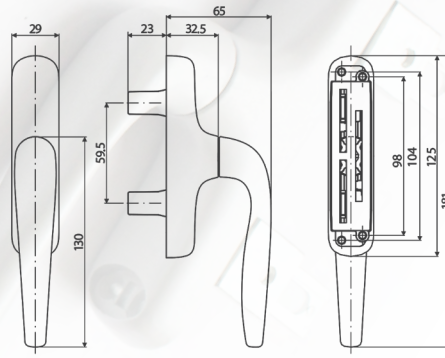
Handle is made of an aluminium and zinc alloy by casting under high pressure. Plastic parts are made of polyamide. Bolts are made of carbon galvanised steel.



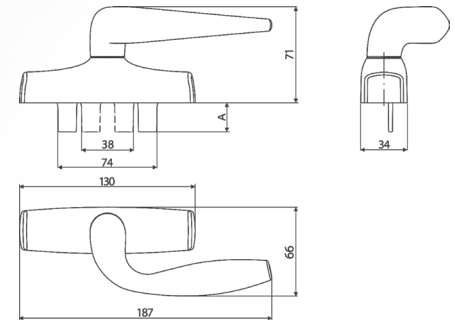
NEVIO Cremone
CN 20120



NEVIO Offset Cremone
CN 20121



ConStyle™
n o u r v e



ConStyle™
n o u r v e

Feature

Designed for installation on curtain wall systems.

Feature

Designed for installation in facade profiles. Handle has the rotation possibility of 90°.

Material

Handle is made of an aluminium and zinc alloy by casting under high pressure. Plastic parts are made of polyamide and polyacetal. Bolts are made of galvanised, carbon and stainless steel.

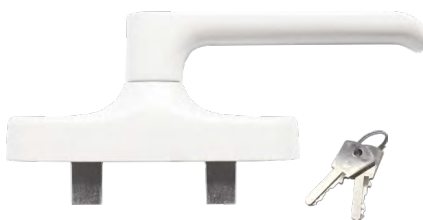
Material

Handle is made of an aluminium and zinc alloy by casting under high pressure. Plastic parts are made of polyamide and polyacetal. Bolts are made of galvanised, carbon and stainless steel.



ARIA Cremone

CN 20140



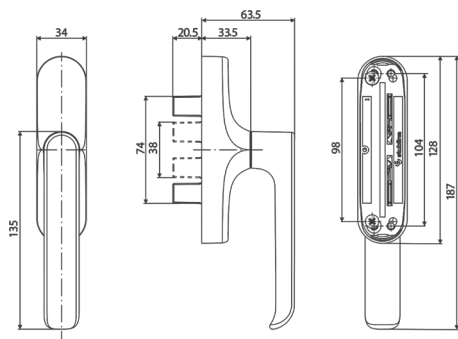
ARIA Cremone w Key

CN 20141

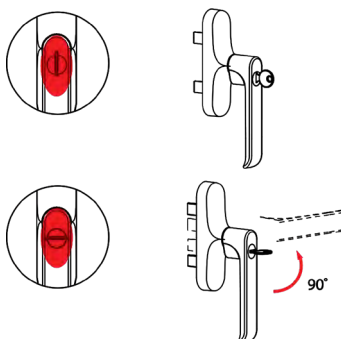


ARIA Removable Cremone

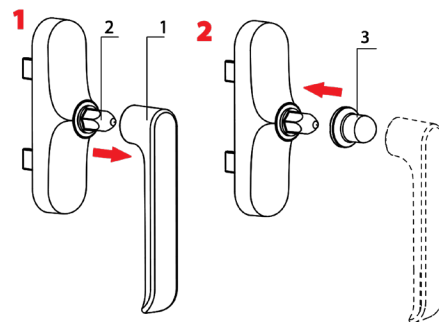
CN 20142



ConStyle™
n o u r v e



ConStyle™
n o u r v e



ConStyle™
n o u r v e

Feature

Designed for installation on curtain wall systems. Handle has the rotation possibility of 90°.

Material

Handle is made of an aluminium and zinc alloy by casting under high pressure. Plastic parts are made of polyamide and polyacetal. Bolts are made of galvanised, carbon and stainless steel.

Feature

Designed for installation on curtain wall systems. Handle equipped with a key locking system.

Material

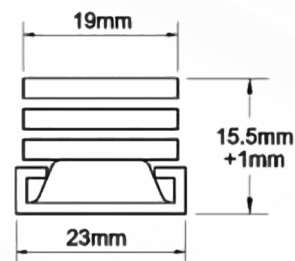
Handle is made of an aluminium and zinc alloy by casting under high pressure. Plastic parts are made of polyamide and polyacetal. Bolts are made of galvanised, carbon and stainless steel.

Feature

Designed for installation on curtain wall systems. Handle has the possibility of removing of the handrail part, which enables window opening only by authorised personnel.

Material

Handle is made of an aluminium and zinc alloy by casting under high pressure. Plastic parts are made of polyamide and polyacetal. Bolts are made of galvanised, carbon and stainless steel.



Heavy Duty

Features

- Manufactured from high grade SUS 304 Austenitic stainless steel
- Engineering-plastic slider for strength, durability and smooth operation
- Unique asymmetric location design provides accurate closure, secure and weathertight seal for the window
- Tested with 25,000 cycles

Application

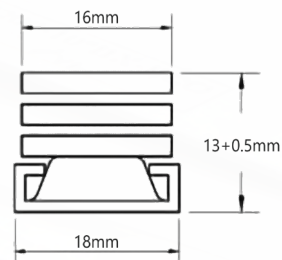
- Suitable for large or heavy duty top hung and side hung casement windows
- For vents over 1000mm high, the opening angle best be restricted to a maximum of 20°
- It has a standard stack height of 16.5mm

Product Code	Stack Height	Top/Side Hung	Max Vent Height	Max Vent Width	Max Vent Weight	Opening Angle
CS-HD00240-12S	16.5	Side Hung	1600	600	38	84
CS-HD00240-18S	16.5	Side Hung	1800	800	45	87
CS-HD00230-12T	16.5	Top Hung	800	1200	50	30/35
CS-HD00230-16T	16.5	Top Hung	1200	1200	82	25/30
CS-HD00230-18T	16.5	Top Hung	1400	1500	100	25/30
CS-HD00230-22T	16.5	Top Hung	1800	1800	110	20/25
CS-HD00230-28T	16.5	Top Hung	2000	2000	130	15/20

**It is the responsibility of the window manufacturer to ensure that the finish window meet any safety requirements and performance specifications.

FRICTION STAYS

Window Application



Standard Duty

Features

- Manufactured from high grade SUS 304 Austenitic stainless steel
- Engineering-plastic slider for strength, durability and smooth operation
- Tested with 25,000 cycles

Application

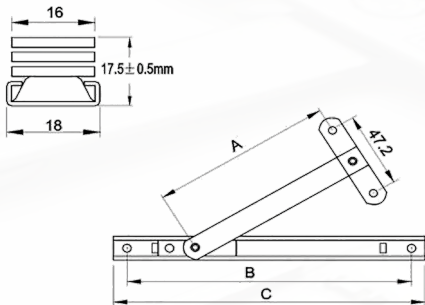
- Suitable for top hung and side hung casement windows
- It has a standard stack height of 13mm

Product Code	Top/Side Hung	Max Vent Height	Max Vent Width	Max Vent Weight	Opening Angle
CS-SD00220-12S	Side Hung	1200	600	18	88
CS-SD00220-16S	Side Hung	1200	700	24	88
CS-SD00200-08T	Top Hung	350	1200	12	64
CS-SD00200-10T	Top Hung	450	1200	16	58
CS-SD00200-12T	Top Hung	550	1200	20	65
CS-SD00200-16T	Top Hung	750	1200	24	52
CS-SD00200-20T	Top Hung	1000	1200	30	42
CS-SD00200-24T	Top Hung	1200	1200	36	38

**It is the responsibility of the window manufacturer to ensure that the finish window meet any safety requirements and performance specifications.



Restrictor Arm
Restrictor Arm w/ key



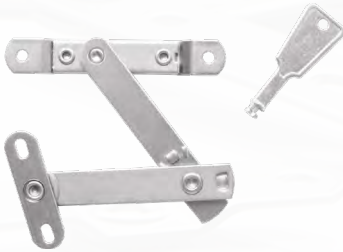
Features

- Manufactured from high grade SUS 304 Austenitic stainless steel
- Limitation on opening angle

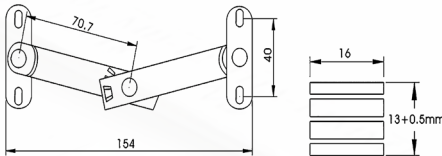
Application

- It can be used as an extra support for large top hung vents

Product Code	Without Key		With Key	
	CS-R00300	CS-R00301	CS-R00320	CS-R00321
Size Available	10"	12"	8"	10"
A	180	209	152	180
B	249	279	185	236
C	268	298	202	254



Concealed Restrictor
CS-R 00330
Concealed Restrictor w/ key
CS-R 00340



Features

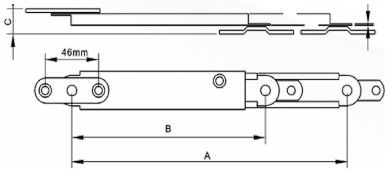
- Manufactured from high grade SUS 304 Austenitic stainless steel
- Fully concealed when window is shut
- Available for key releasable

Application

- It can be used as a support and a restrictor for top and side hung application



Telescopic



Features

- Manufactured from high grade SUS 304 Austenitic stainless steel
- The vent can be locked and open at a desired position for ventilation purposes

Application

- Telescopic series applies on top hung window to limit the opening.

Size	A	B	C	D
CS-T00380-8	203	155	16	1.0



**Bi-Directional
Actuator**

A 90160



T-Adaptor

A 90220



External Kit

A 90240



Corner Drive

A 90140



Striker C1267

A 90100



Locking Pawl

A 90120



Connection Rod

A 90200



Slide Flush Bolt

A 90181



Flip Flush Bolt

A 90180

ACCESSORIES

HANDLE

Sliding door application

ConStyle™
Signature





RU Handle

Features

- One locking action activates two locking points
- Suitable for door stile from 32mm to 45mm
- Opposing twin breaks to prevent door being lifted from the track
- Fully reversible for left or right handed doors
- Anti-slam button to prevent operation of the handle when the door is open, avoiding damage to the mechanism

Application

RU handle is designed to fit large sliding inline doors with the ability of maximising performance while minimising effort



Non Locking

CS 01001



Double D Non Locking

CS 01004



Locking

CS 01002



Double D Locking

CS 01005



Dummy

CS 01000



Double D Dummy

CS 01003



Double D Non Locking

CS 01051

Sonoma Handles

Features

Multipoint locking mechanism with anti-slam device that offers both aesthetic appeal as well as peace of mind.

Sonoma Sliding Glass Door Handle

Material: High-pressure die-cast zinc

Finishing: Powder Coated

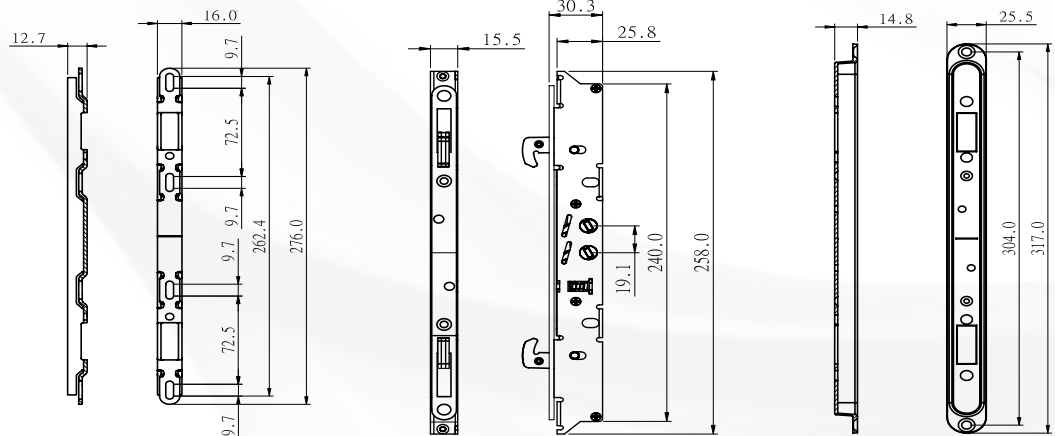
Multipoint Mortise Deadlock and Keeper

Material: Mild Steel with zinc plated passivated



Double D Locking

CS 01052



HANDLE

Sliding door application



Fixed
CS 01020



Automatic
CS 01021



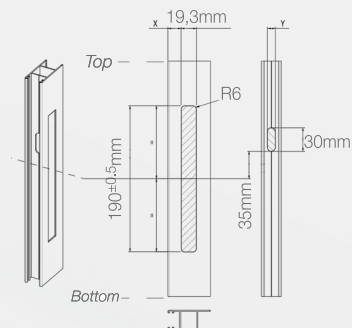
Positioner
CS 01022

UNI Design Handles

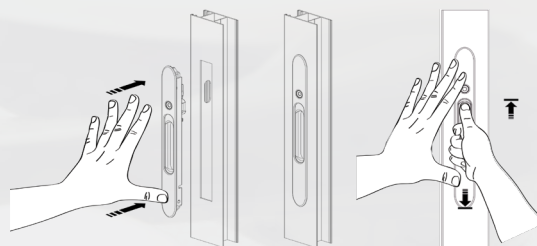
Features

- Easy to install
- No screw needed
- Trendy Design
- Easy to identify OPEN/CLOSE position
- Environmental friendly material
- Color customization available
- Available in 3 versions (Fixed, With Positioner, Automatic)

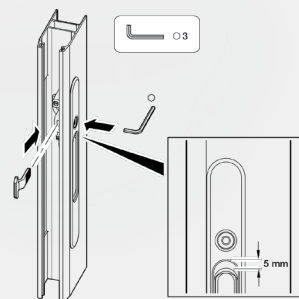
1



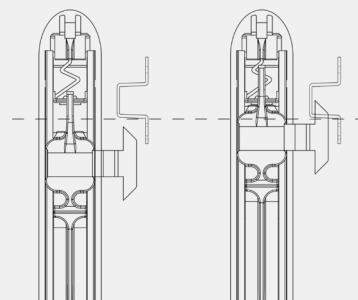
2



3



4



ConStyle™
Signature

Features

- Complete monoblock locking system, 1 to 3 points, dedicated to the sliding frame
- An industrial concept: U-rail face plate of 16mm, square edge of 7mm, 43mm between handle axes
- A productivity gain: integrated monoblock system without any addition part
- Total flexibility: compatible with all kind of handles, standard or customizable
- A wide range of Constyle Signature handles combining design, ergonomics and customization
- Application of cathaphoresis coating method provides anti-corrosive feature to the rod
- System designed to minimise mis-handling situation and no maintenance required
- Adjustable centre bolt
- Ultimately customize to fit a wide range of house systems
- Available for uPVC and Aluminium



Constyle Syros



Syros D Handle

CS 01040



Syros Flush Handle

CS 01041

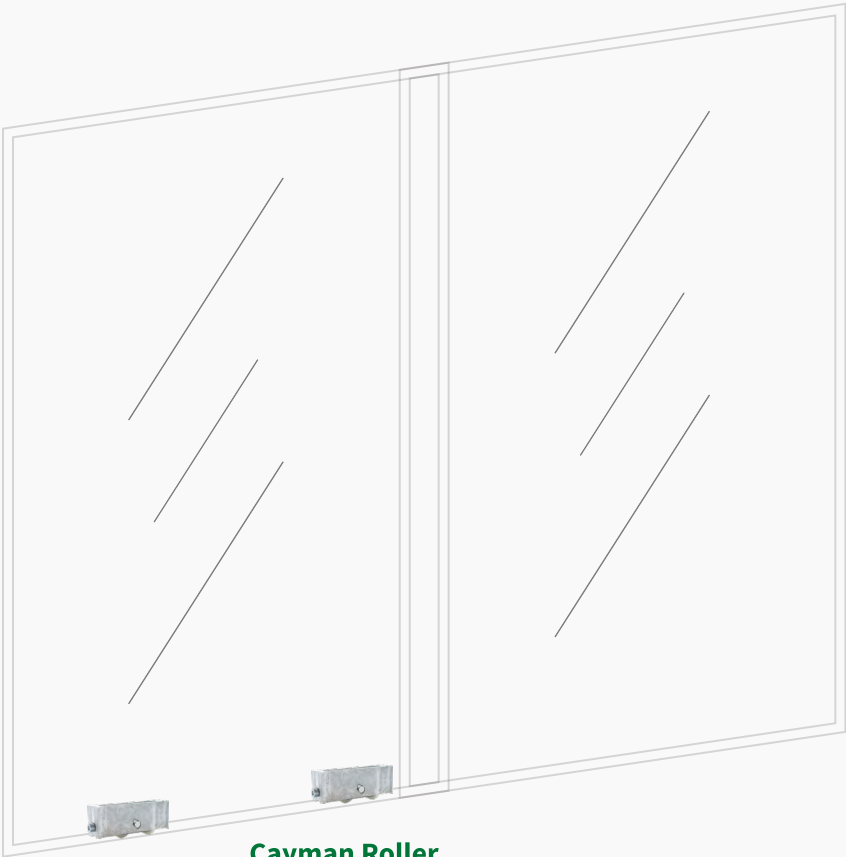
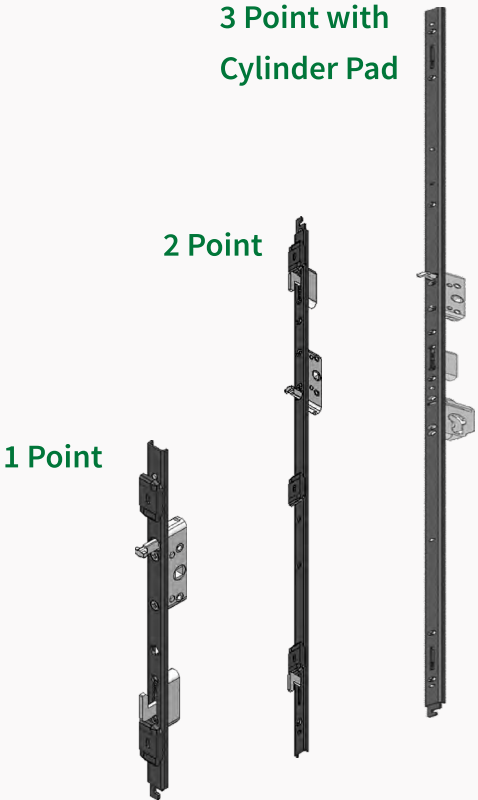
HANDLE

Sliding door application

Constyle Syros System



Product Code	Number of Points	Length of Rod (mm)	“U” Shape (mm)	Spindle Mechanism (mm)	Center Axis (mm)
A 91040	1 Point	295	16 x 5	7	43
A 91041	2 Points	650	16 x 5	7	43
A 91042	3 Points	1150	16 x 5	7	43
A 91043	3 Points w Cylinder Pad	1155	16 x 5	7	43
A 91044	Additional Rod	420	16 x 5	-	-



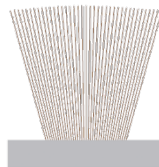
CS 01300, CS 01301 (Pg 21)

SLIDING DOOR
SOLUTION



The additional polypropylene barrier fin provides extra protection against air and water penetration

SILHOUETTE FIN

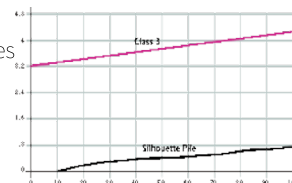


The additional monofilament centre weave provides extra durability on, for example, roller shutter applications

SILHOUETTE MONO

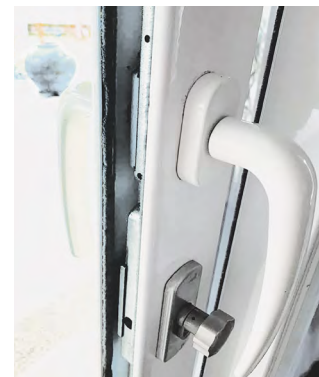
Features

1. Product construction comprises a semi-rigid translucent polypropylene base molecularly bonded to a flexible polypropylene multi-filament yarn seal.
2. This construction allows for 'glide fitting' into the seal housing thus eliminating 'snagging' during the seal fitting operation whilst at the same time providing a 'soft' seal when in contact with the sealing surface.
3. Polypropylene is characterized by outstanding **Durability, Water Repellent, and Weather Resistance.**
4. Silhouette products are fully siliconised, display low friction properties, UV stable, operate over a wide range of temperatures and highly resistant to abrasion, ozone and biological attack.
5. BS5368:1976 severe weather rating requirement: Above class 3
6. Fulfilled requirements of the Architectural Aluminium Manufacturers Association of the USA (AAMA701.2-1974)



Application

Silhouette products are ideal for 'automatic insertion' in assemblies for many different sliding and wiping seal applications including, insect screens, roller shutters, sliding wardrobes, horizontal sliding windows, vertical sliding windows, secondary glazing, doors and draught excluders.



Options

Size Availability

- Base width: 5mm - 7mm
- Pile height: 5mm - 24mm, 1mm increment ($\pm 0.5\text{mm}$) * Additional product height provides the key benefit of extra sealing capacity

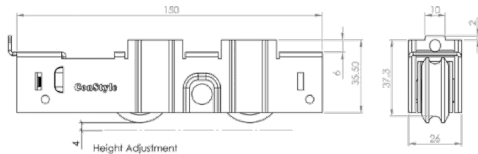
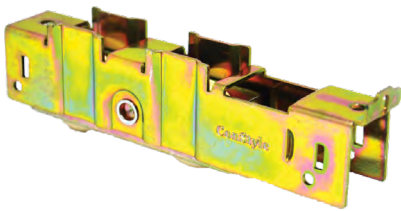
Product Length & Packaging (Special Packaging Patent)

- 2 reels per outer carton
- Reel length: $\leq 850\text{m/reel}$, dependent upon product dimensions (Further information available upon request)

Type	Width	Height									Length										Colour		
		350	425	500	550	600	650	700	900	1150	200	275	300	320	350	400	475	500	550	600	800	Black	Grey
FN	048	●	●			●			●							●	●			●		●	●
	060								●					●		●							●
	069							●	●				●			●							●
RP	029									●				●									●
	048	●	●	●	●			●						●			●	●	●	●	●	●	●
	060							●					●										●
	065								●		●												●
	069			●				●								●						●	●
	110								●		●												●
																							●

WEATHERLPILE

Sliding door application



Twirol Roller

CS 01320

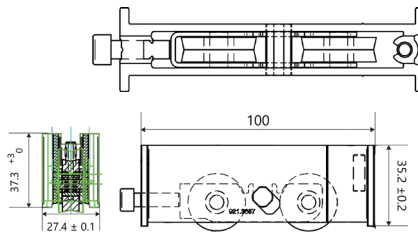
Designed to meet the current landscape of modern architectural accessories demands. The roller is fitted with the innovative TWIRO wheels, with double row bearing technology that offers effortless sliding action as well an excellent life span.

Features

- 180kg/panel (With 2 rollers)
- Mild steel with zinc plating & engineering polymer wheel

Application

- Rear & side mounting
- Flat side profile for packing installation sliding



Cayman Roller 1

CS 01300

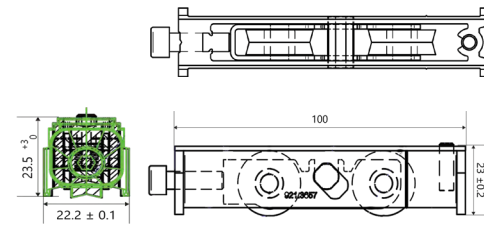
Features

- 160kg/panel (With 2 rollers)
- Needle bearing for smooth sliding performance of the sash. Bearing protected by marine grease with high corrosion resistance.
- Aluminium body that provide a better strength and flexibility.
- Composite wheel are made from composite material to provide greater strength.

Customization

Cayman roller are available for customization, options as below:

- For single roller, leaf weight can be up to 80kg or 100kg (with a pair of single roller)
- For double roller, leaf weight can be up to 160kg or 200kg (with a pair of double roller)
- For stainless steel roller, leaf weight can be up to 250kg (with a pair of double roller)



Cayman Roller 2

CS 01301

ROLLER

Sliding door application



HANDLE

Swing Door Application

● aluminium



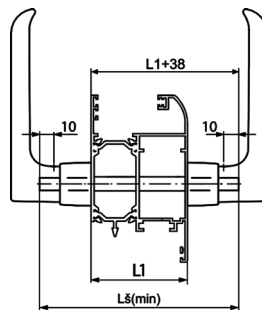
VITALE Door Cremone
CN 22000 (Pg 23)



Mortise Lock
A 92000 (Pg 24)
A 92001 (Pg 24)



Cranked Hinge
A 92020 (Pg 23)



Vitale Door Cremone

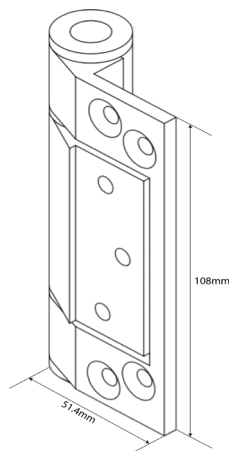
CN 22000

Feature

Doorknob with code CN 22000 is designed for installation in all types of aluminium door systems. It comes with the length of the shaft square section 140/130/160mm.

Material

Handle is made of an aluminium and zinc alloy by casting under high pressure. Plastic parts are made of polyamide. Bolts are made of stainless steel. Knob is available in all RAL colours.



Cranked Hinge

A 92020

Feature

Constyle Cranked Hinge is made of high quality AL-6063 T5 grade aluminium alloy with solid core Austenitic SUS 304 stainless steel. It is designed for heavy duty application and available in different colour to match with current profile use.

Application

It is applicable to most aluminium or timber swing door.

Load Capacity
900mm (Width) x 2800mm (Height) - 80kg = 4 hinges

Door Height
<2400mm - 3 hinges
>2400mm - 4 hinges

Product Size
51.4mm (Width) x 108mm (Height)

HINGES



Constyle Mortise Lock

A 92000

Features

- Characteristics locks
- The possibility of installation to the left/right door

Material

Stainless steel (Galvanised steel) lock forend; latchbolt, deadbolt and the insert for the square pin are from zinc plated zamak; spring and mechanism positions are from high strength steel; zinc plated steel lock body and screws

MULTIPOINT

Constyle Mortise Lock

A 92001

Features

- Characteristics locks
- The possibility of installation to the left/right door
- The possibility of multi-point locking
- Locking with pulling up the handle

Material

Stainless steel (Galvanised steel) lock forend; latchbolt, deadbolt and the insert for the square pin are from zinc plated zamak; spring and mechanism positions are from high strength steel; zinc plated steel lock body and screws

MORTISE LOCK



CS 02000-80

Max Door Weight: 80 - 100kg

Max Door Width: 900 - 1000mm

Dimension: 276 x 108 x 40mm

- 90° hold-open, open in both directions, maximum opening 130°
- Closing speed adjustable, two stage speed adjustments, position can be adjusted horizontally and vertically



CS 02001-60

Max Door Weight: 60 - 150kg

Max Door Width: 600 - 1100mm

Dimension: 285 x 82 x 48.5mm

- 90° hold-open, -105° to 105° at any point hold-open, open in both directions, maximum opening 360°
- Closing force adjustable from EN2 to EN4, closing speed adjustable, two-stage adjustment, position can be adjusted horizontally and vertically



CS 02002-100

Max Door Weight: 100kg, 120kg, 150kg

Max Door Width: 900 - 1250mm

Dimension: 306 x 108 x 41mm

- 90° hold-open, open in both directions, maximum opening 130°
- Closing speed adjustable, two stage speed adjustments, position can be adjusted horizontally and vertically



CS 02003-300

Max Door Weight: 300kg

Max Door Width: 1500 - 3500mm

Dimension: 341 x 78 x 60mm

- 90°, 130° hold-open, open in both directions, maximum opening 360°
- Closing speed adjustable, two stage speed adjustments, position can be adjusted horizontally and vertically



FLOORSPRING

Swing Door Application



 Bottom Patch

 Top Corner Patch

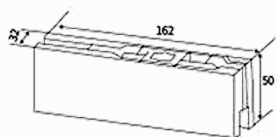
 Lock Patch

 Top Patch

 L Corner Patch

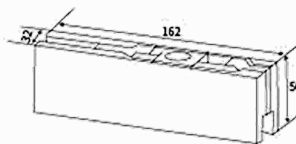
PATCH FITTINGS • glass

Swing Door Application



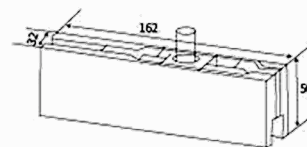
Bottom Patch

CS 02020



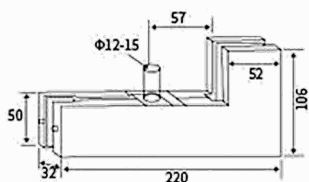
Top Patch

CS 02030



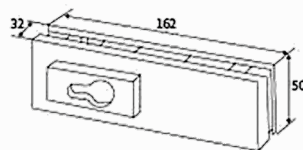
Top Corner Patch

CS 02040



L Corner Patch

CS 02050



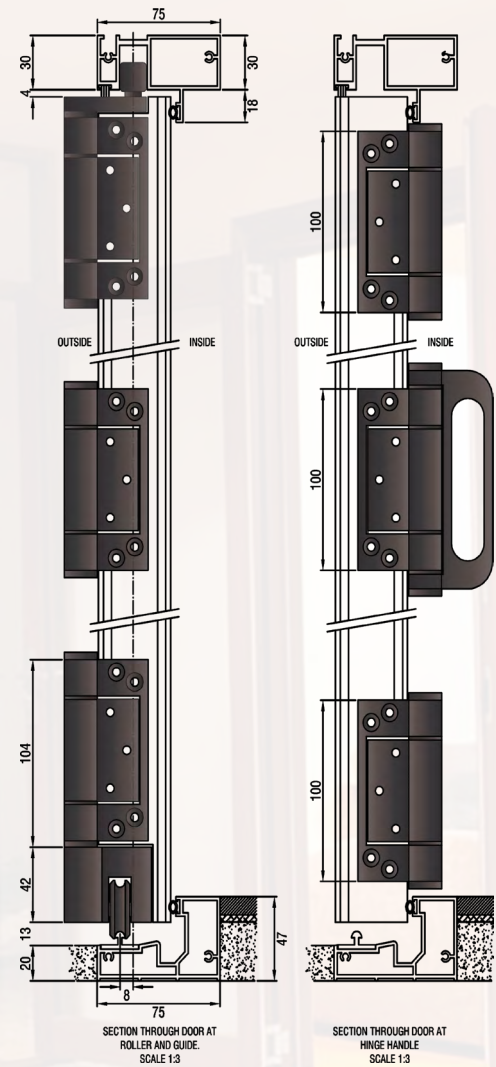
Lock Patch

CS 02060



Pivot

CS 02080



4 LEAVES FOLDING TO ONE SIDE



5 LEAVES FOLDING TO ONE SIDE



3 LEAVES FOLDING TO EACH SIDE

VISTAFOLD

Folding Door Application

Specifiction

Max Leaf Mass: 70kg

Door Leaf Width: Max 900mm

Door Leaf Height: Max 2700mm

Recommended: 2, 3, 4 or max 5 leaves hinged together



**Vista Hinge
Top Guide**

VHGTG



Vista Hinge

VHG



**Vista Hinge
Handle**

VHGH



**Vista Hinge
Bottom Roller**

VHGBR



**Vista Hinge
End Bottom Roller**

VEHGBR



**Vista
Flush Bolt**

VFB

ACCESSORIES



1

The Binjai on the Park, KLCC

Within the boundary of KLCC, development amidst the splendor of natural greenery with a vista that commands attention and awe

2

The Face Suites, KL

All-suite hotel concept comprising of 200 units of sheer luxury with an inspired design and attention to details with a stunning view of the Kuala Lumpur city skyline.

3

KL Eco City

World-class city-within-a-city that exudes extraordinary architectural boldness.

4

8 Kia Peng

High-end residential project that will be built on a 1.05-acre freehold parcel on Jalan Changkat Kia Peng, Kuala Lumpur

5

Damansara City 2

DC, the flagship development for Goucoland Malaysia, is the first integrated development in this prime neighbourhood of Damansara Height

6

KL Sentral

An exclusive urban centre built around Malaysia's largest transit hub, offering global connectivity, excellent investment opportunities, business convenience and an international lifestyle

7

Icon City 3 & 6

A Tripler Green Certified integrated development stylised with modern and contemporary design which has achieved MSC Malaysia Status

8

Stonor Park Condominium

Winner of FIABCI Best High Rise Residential Building award

9

Zehn Bukit Pantai

Nestled within the tranquility of Bukit Pantai, a popular hilly enclave for Kuala Lumpur's affluent, expatriates and professionals. Designed by the award-winning BEP Akitek.

10

Cantara Residences

Another prestigious project by award-winning Sime Darby Property, Cantara Residences is all about exceeding expectations.

LOCAL

Project Reference



1

Capitol Grand Melbourne

Realised through the pioneering of LK Property Group and world renowned architects Bates SMart, elliptical forms of elegant simplicity create an unmistakable vision of beauty

2

U City Adelaide

This \$80 million project will create a 20-storey, mixed-use building, bringing together Uniting Communities' extensive service offering and specialist disability long-term rental and short-term respite accommodation, commercial and retail spaces with the very first of its kind, city retirement living.



3

Don Antonio Quezon City, Philippines

Don Antonio Residences is an 4 Storey residential townhouse enclave nestled in quiet neighborhood of Barangay Holy Spirit.Be able to enjoy the convenience of having a walking distance commercial, leisure and business districts.

4

Village @ Pasir Panjang Singapore

The Village brings back the simple, elegant living to just 148 families. This oasis of calm sits in an ideal location on the West Coast of Singapore,



5

68 Residence, Myanmar

At 68 Residences your family will be surrounded by the wonder of the World's Oldest Buddhist Pagoda, delivering the longevity and the health, the spiritual calmness and the overwhelming success that comes from being a part of an international icon.

6

Bartley Business Centre, Singapore

BARTLEY BIZ CENTRE is a 30-year Leasehold light industrial b1 located at 15 Kaki Bukit Road 4 in District 14 (Central east - Paya Lebar / Geylang / Eunos) - Rest of Central Region in Singapore.

INTERNATIONAL



ConStyleTM Architectural Products
(239648-X)

No. 4 Jalan Tembaga SD5/2
Bandar Sri Damansara
52200 Kuala Lumpur, Malaysia

Tell: +6 (03) 6273 3052 // +6 (03) 6273 3501

Fax: +6 (03) 6273 3167

Email: constyle@constyle.com.my

Website: www.constyle.com.my